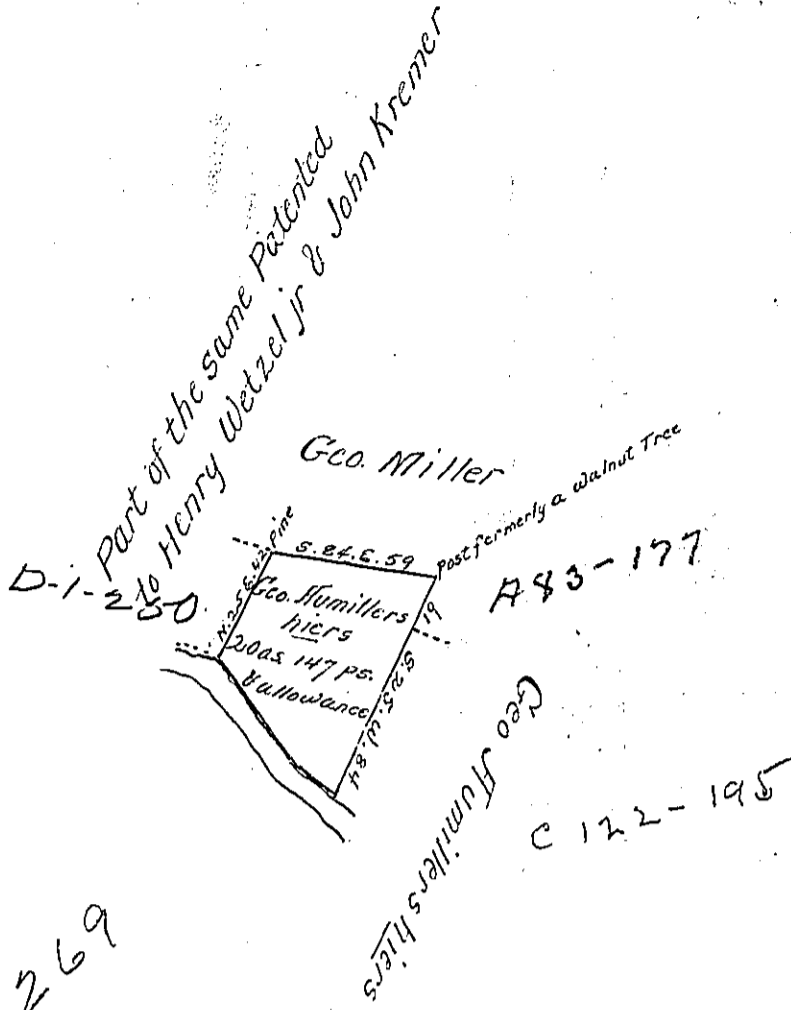


Courses up Middle creek
N. 49. W. 16
N. 41. W. 43.4



A-13-269

A Draught of a tract of land situate in Penns
 township Union County - being part of of the same
 tract of land which was originally surveyed to John
 Amiller in pursuance of his warrant dated the
 6th Day of August 1766 (upon application No. 792.)
 containing in the whole forty eight acres and
 allowance &c. The above part Surveyed for the heirs
 of George Amiller Deceased containing twenty
 acres and one hundred and forty seven perches
 and allowance of six percent &c. March 24th.
 1838.

Solomon Engel Esq.
 To John Taylor Esqr.
 Surveyor General Pennsylv^a

IN TESTIMONY that the above is a copy of the original remaining on file in
 the Department of Internal Affairs of Pennsylvania, made
 conformably to an Act of Assembly approved the 16th day of
 February, 1833, I have hereunto set my Hand and caused
 the Seal of said Department to be affixed at Harrisburg,
 this seventh day of July 1903

Loose P. Brown
 Secretary of Internal Affairs.